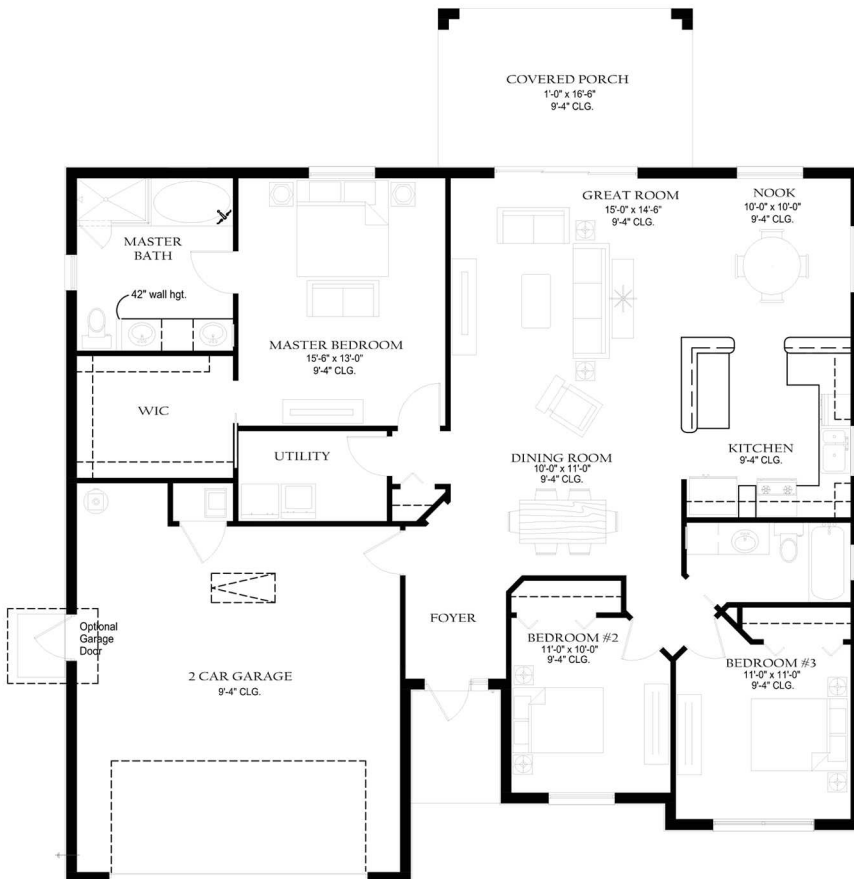




## THE BERMUDA PALM



|                         |              |
|-------------------------|--------------|
| Living Area U/A.....    | 1,580 sq. ft |
| 2 Car Garage .....      | 508 sq. ft   |
| Entry.....              | 20 sq. ft    |
| Rear Covered Porch..... | 160 sq. ft   |
| <hr/>                   |              |
| TOTAL.....              | 2,268 sq. ft |

| THE BERMUDA PALM       |                 |
|------------------------|-----------------|
| 3 BEDROOM / 2 BATHROOM |                 |
| LIVING AREA U/A        | 1,580 SF        |
| 2-CAR GARAGE           | 508 SF          |
| FRONT ENTRY            | 20 SF           |
| COVERED PORCH          | 160 SF          |
| <b>TOTAL</b>           | <b>2,268 SF</b> |



**PASSAGE ISLAND**  
CONSTRUCTION

[www.PassageIslandHomes.com](http://www.PassageIslandHomes.com)