

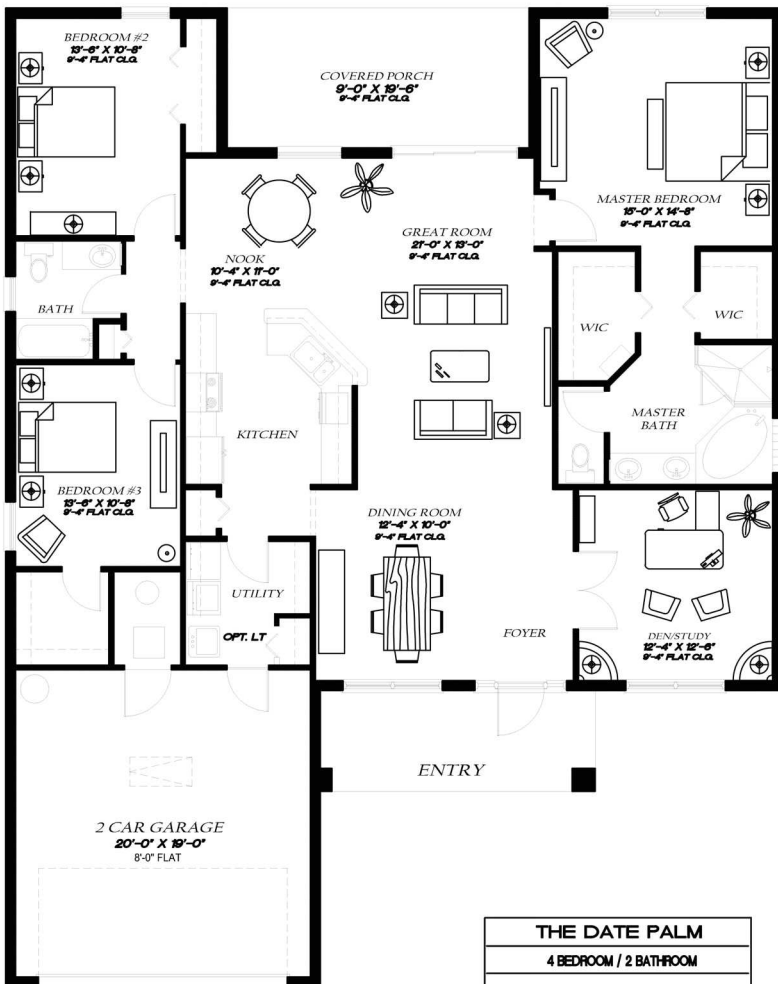


## THE DATE PALM

Living Area U/A.....1,932 sq. ft.  
 2 Car Garage .....438 sq.ft  
 Entry.....23 sq.ft  
 Rear Covered Porch..... 102 sq.ft.

---

TOTAL.....2,483 sq.ft



| THE DATE PALM          |                 |
|------------------------|-----------------|
| 4 BEDROOM / 2 BATHROOM |                 |
| LIVING AREA U/A        | 1,968 SF        |
| 2-CAR GARAGE           | 436 SF          |
| FRONT ENTRY            | 115 SF          |
| COVERED PORCH          | 175 SF          |
| <b>TOTAL</b>           | <b>2,694 SF</b> |



**PASSAGE ISLAND**  
 CONSTRUCTION

[www.PassageIslandHomes.com](http://www.PassageIslandHomes.com)