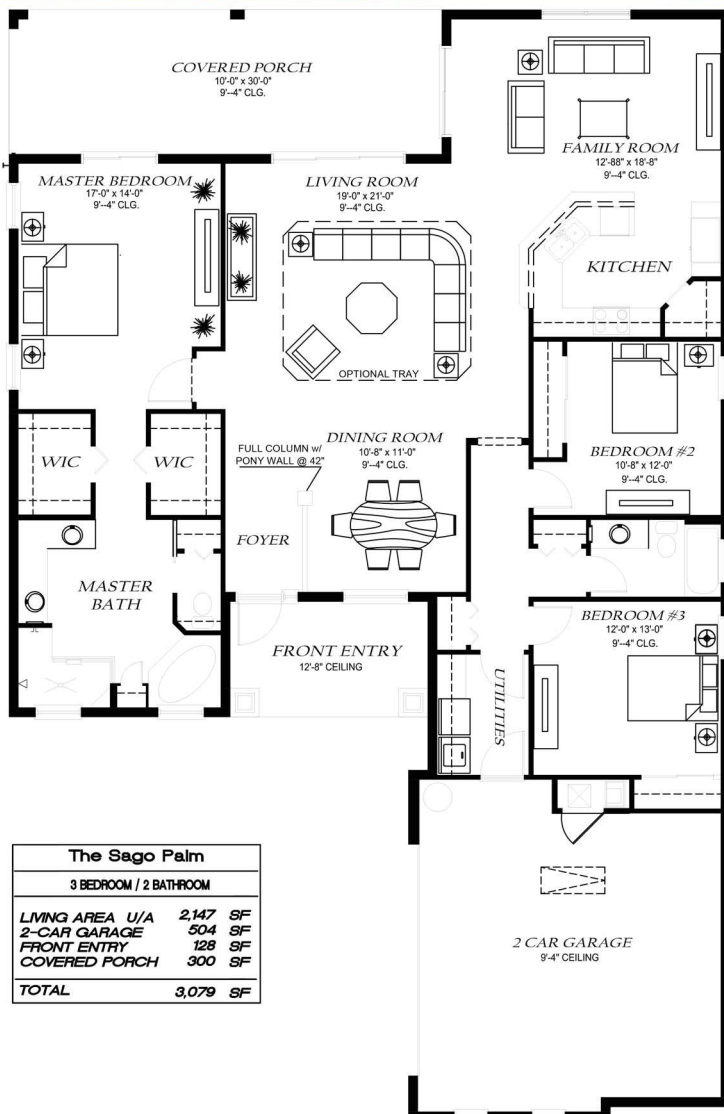




THE SAGO PALM

Living Area U/A.....2,147 sq. ft.
 2 Car Garage504 sq.ft
 Entry.....128 sq.ft
 Rear Covered Porch..... 300 sq.ft.

TOTAL.....3,079 sq.ft



The Sago Palm	
3 BEDROOM / 2 BATHROOM	
LIVING AREA U/A	2,147 SF
2-CAR GARAGE	504 SF
FRONT ENTRY	128 SF
COVERED PORCH	300 SF
TOTAL	3,079 SF



PASSAGE ISLAND
 CONSTRUCTION

www.PassageIslandHomes.com