



THE DATE PALM

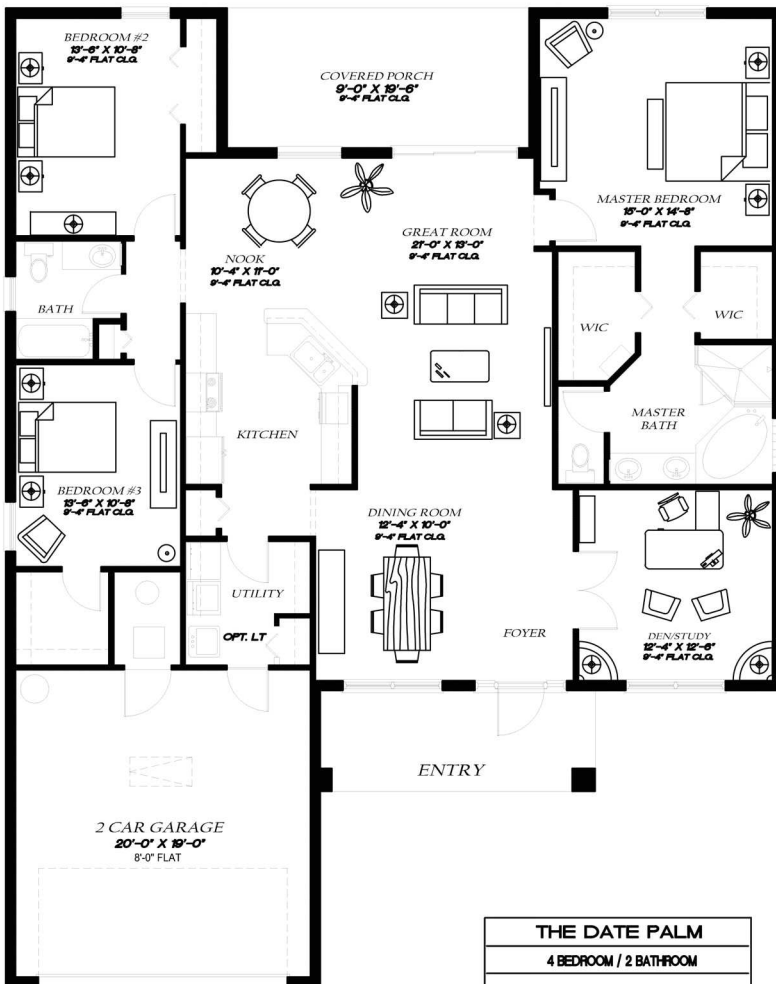
Living Area U/A.....1,932 sq. ft.

2 Car Garage438 sq.ft

Entry.....23 sq.ft

Rear Covered Porch..... 102 sq.ft.

TOTAL.....2,483 sq.ft



THE DATE PALM	
4 BEDROOM / 2 BATHROOM	
LIVING AREA U/A	1,968 SF
2-CAR GARAGE	436 SF
FRONT ENTRY	115 SF
COVERED PORCH	175 SF
TOTAL	2,694 SF



PASSAGE ISLAND
CONSTRUCTION

www.PassageIslandHomes.com