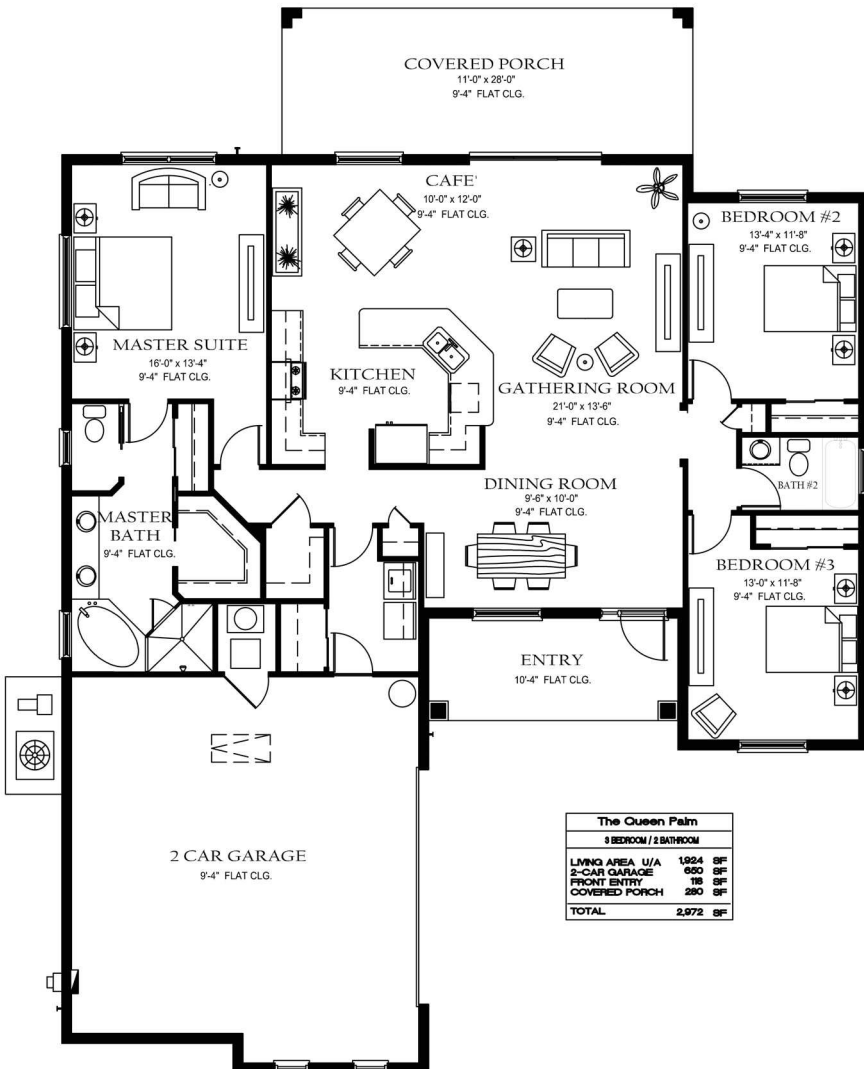




THE QUEEN PALM



Living Area U/A.....	1,924 sq. ft
2 Car Garage	650 sq. ft
Entry.....	118 sq. ft
Rear Covered Porch.....	280 sq. ft
<hr/>	
TOTAL.....	2,972 sq.ft

The Queen Palm	
3 BEDROOM / 2 BATHROOM	
LIVING AREA U/A	1,924 SF
2-CAR GARAGE	650 SF
FRONT ENTRY	118 SF
COVERED PORCH	280 SF
TOTAL	2,972 SF



PASSAGE ISLAND
CONSTRUCTION