



COVERED PORCH  
10'-0" X 16'-0"

## THE BERMUDA PALM

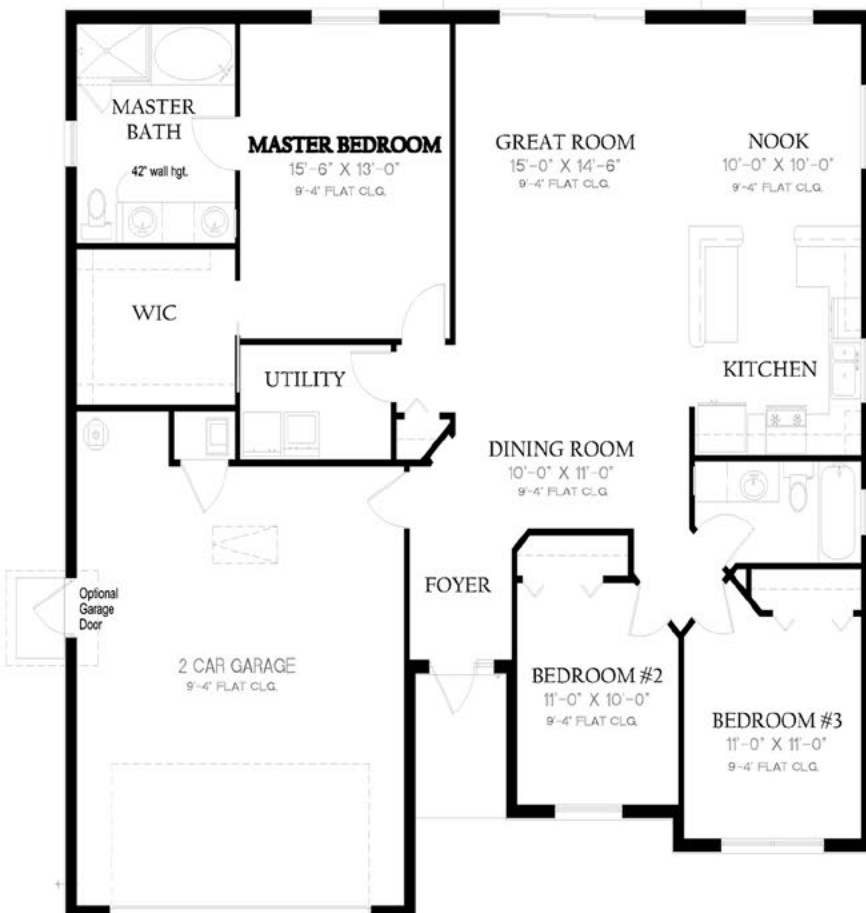
Living Area U/A ..... 1,580 sq. ft.

2 Car Garage ..... 508 sq. ft.

Entry ..... 20 sq. ft.

Rear Covered Porch ..... 160 sq. ft.

**TOTAL ..... 2,268 sq. ft.**



**PASSAGE ISLAND  
CONSTRUCTION**

[www.PassageIslandHomes.com](http://www.PassageIslandHomes.com)

Elevation rendering and floor plan represent a Passage Island Construction model home. Model homes may include various upgraded elevations, finishes, and other features that do not come standard. Please consult with sales representatives for information on standard versus upgraded home features. Floor plans and elevations are artist's concepts and may vary in precise detail from the plans and specifications. We reserve the right to change prices, plans, features, dimensions and specifications without notice. Subject to errors, omissions, deletions and availability. CB-C057310